

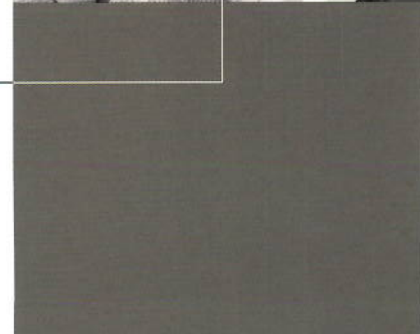
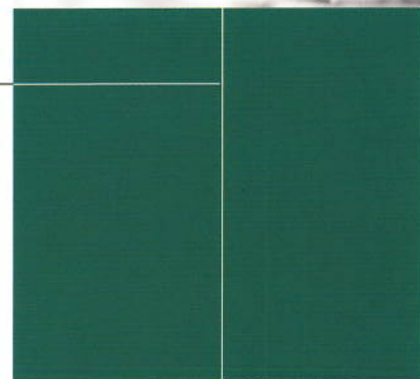
Ph.D. in Public Health

HEALTH SERVICES & POLICY RESEARCH CONCENTRATION

2016–2017

The concentration in health services and policy research (HSRP) prepares doctoral scholars to research public health and health care policy. Areas include the distribution of and access to health care services, the finance and reimbursement of health care services, and the quality and outcomes of health care services and programs. To prepare doctoral scholars for interdisciplinary research aimed at making broad impacts to public health, the health services and policy research concentration draws from disciplines beyond public health as well, including health administration, health policy, public administration, business, public health law, health ethics and economics.

PHD CORE REQUIREMENTS (18 credit hours)		Credits
PH 8721	Epidemiologic Methods II	3
PH 9120	Theory & Practice in Health & Prevention	3
PH 9140	Advanced Research Methods	3
PH 9150	Public Health Ethics	3
PH 9810	Biostatistical Methods I	3
PH 9820	Biostatistical Methods II	3
PROFESSIONAL SEMINARS (5 credit hours)		
PH 8180	Doctoral Research Seminar I	3
PH 8181	Doctoral Research Seminar II	2
RESEARCH/TEACHING/PRACTICUM and CULMINATING EXPERIENCE (12 credit hours)		
PH 9960	Doctoral Practicum	3
N/A	Doctoral Comprehensive Exam	N/A
PH 9990	Doctoral Dissertation	9
Area Total:		35
HEALTH SERVICES & POLICY RESEARCH CONCENTRATION (27 credit hours)		
Required HSRP Concentration Courses (9 credit hours)		
PH 8220	Principles of Health Service Research I: Thematic Background	3
PH 8240	Introduction to Health Services Research II: Basic Methods	3
PH 8250	Health Economics & Policy	3
Advanced Research Methods and Statistics and Elective Courses (18 credit hours)		
<i>Select at least six courses in consultation with your faculty advisor.*</i>		
PH 8285	Social Determinants of Health	3
PH 8830	Advanced Statistical Topics	3
PH 8885	Fundamentals of Clinical Trials	3
PH 8890	Special Topics in Biostatistics	3
PH 8290	Population Health Informatics	3
ECON 8220	Human Resources & Labor Markets	3
ECON 8740	Applied Statistics & Econometrics	3
PMAP 8131	Applied Research Methods & Statistics II	3
PMAP 8141	Microeconomics for Public Policy	3
PMAP 8521	Evaluation Research: Design & Practice	3
PMAP 9211	Applying Research to Policymaking: Examples from Health Care Policy	3
SOCI 8020	Research Methodology	3
SOCI 8118	Aging, Health & Disability	3
SOCI 8234	Race-Ethnicity & Health	3
STAT 8090	Applied Multivariate Statistics	3
STAT 8760	Sample Surveys	3
Area Total:		27
Degree Total		62



* Other appropriate elective courses may be available. Consult with your faculty advisor. Students should receive approval from their faculty advisors on the Doctoral Program of Study form before enrolling in and paying for any elective course.

DOCTOR OF PHILOSOPHY IN PUBLIC HEALTH CURRICULUM

The objective of the doctor of philosophy degree (Ph.D.) in public health at the School of Public Health is to educate the next generation of leaders to conduct independent research in academia, public policy, health care organizations and the private sector. Graduates of the Ph.D. program in public health contribute advances to public health scholarship and develop interventions to promote health, reduce health disparities, and ameliorate critical health problems at the local and global levels.

THE SCHOOL OF PUBLIC HEALTH:

- Prepares students to address contemporary public health problems with multi-disciplinary skills
- Advances public health sciences and our understanding of the causes and prevention of diseases
- Educates professionals and lay audiences to promote public health and disease prevention with service activities, initiatives, community-based projects and collaborations with the public health workforce

CONCENTRATIONS

- Environmental Health
- Epidemiology
- Health Promotion & Behavior
- Health Services & Policy Research

SUMMARY OF PH.D. DEGREE REQUIREMENTS: 62 CREDIT HOURS

The Ph.D. program requires a minimum of 62 credit hours of doctoral course work in a declared public health concentration. Candidates are required to complete a practicum, a comprehensive exam and a dissertation. All doctoral students will take core and research courses in addition to their concentration courses.

- Ph.D. core requirements: 18 credit hours
- Professional seminars: 5 credit hours
- Public health concentration with electives: 27 credit hours
- Research, teaching, practicum and culminating experience: 12 credit hours

PREREQUISITES: BASIC PUBLIC HEALTH CORE

Applicants to the Ph.D. program must provide documentation of their successful completion of the five core public health competencies at the graduate level, which the Council on Education for Public Health designates as the following: biostatistics, epidemiology, environmental health, health services administration, and social and behavioral sciences. Applicants can waive these requirements if they enter the Ph.D. program with an M.P.H. or have successfully completed comparable courses with a grade of B or better.



FOR MORE INFORMATION

Shannon R. Self-Brown, Ph.D.
*Professor, School of Public Health
Director, School of Public Health
Ph.D. Program
Associate Director, National SafeCare
Training and Research Center*

Phone: 404-413-1283

Email: sselfbrown@gsu.edu