

Ph.D. in Public Health

ENVIRONMENTAL HEALTH CONCENTRATION

2016–2017

The concentration in environmental health (EVHT) provides Ph.D. students with the skills, knowledge, and experience to understand the chemical, physical and microbiological aspects of environmental and occupational exposures. Students will learn to measure and model ambient, indoor and personal exposure to environmental and workplace contaminants and hazards. They will also develop instruments and methods for collecting, measuring, analyzing and assessing the effects of physical, chemical and biological stressors on human disease in communities to provide scientific evidence for sound environmental and health policies.

PHD CORE REQUIREMENTS (18 credit hours) Credits

PH 8721	Epidemiologic Methods II	3
PH 9120	Theory & Practice in Health & Prevention	3
PH 9140	Advanced Research Methods	3
PH 9150	Public Health Ethics	3
PH 9810	Biostatistical Methods I	3
PH 9820	Biostatistical Methods II	3

PROFESSIONAL SEMINARS (5 credit hours)

PH 8180	Doctoral Research Seminar I	3
PH 8181	Doctoral Research Seminar II	2

RESEARCH/TEACHING/PRACTICUM and CULMINATING EXPERIENCE (12 credit hours)

PH 9960	Doctoral Practicum	3
N/A	Doctoral Comprehensive Exam	N/A
PH 9990	Doctoral Dissertation	9

Area Total: **35**

ENVIRONMENTAL HEALTH CONCENTRATION (27 Credit Hours) Credits

Required EVHT Concentration Courses (9 credit hours)

PH 9270	Environmental Exposure Analysis	3
PH 8310	Environmental & Occupational Epidemiology	3
PH 8320	Human Health & Global Environmental Change	3

Environmental Health Advanced Research Methods and Statistics Courses (12 credit hours)

Select at least four courses in consultation with your faculty advisor.*

PH 8260	Spatial Population Health I	3
PH 8261	Spatial Population Health II	3
PH 8830	Advanced Statistical Topics	3
PH 8890	Special Topics in Advanced Statistical Modeling	3
PH 8690	Special Topics in Environmental Health	3
PH 9731	Epidemiologic Methods III	3
PH 9741	Advanced Topics in Epidemiologic Methods	3

Environmental Health Elective Courses (6 credit hours)

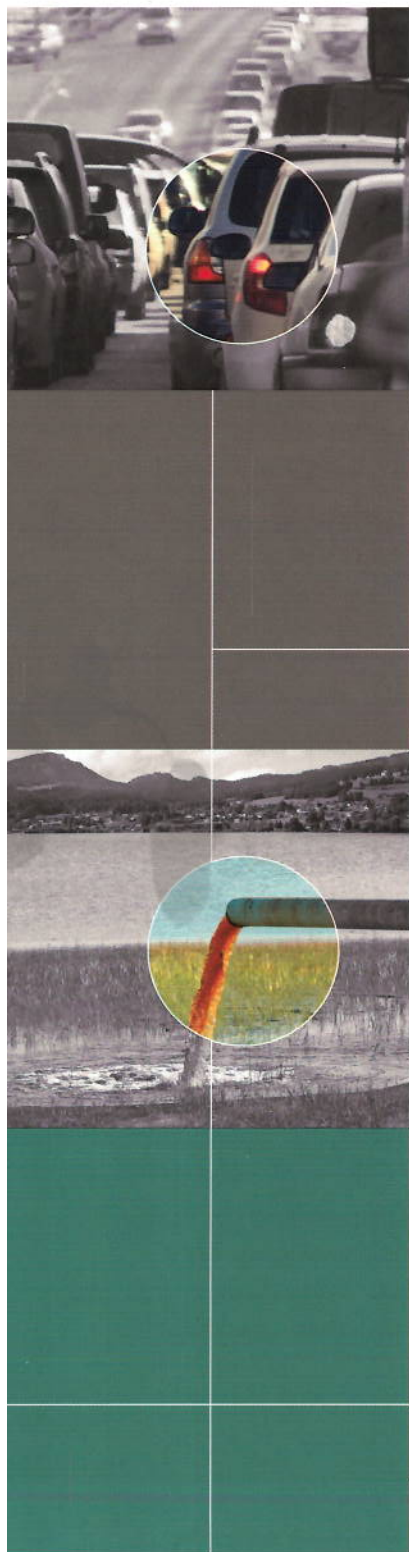
Select two courses in consultation with your faculty advisor.

PH 8285	Social Determinants of Health	3
PH 8330	Environmental Factors in Maternal and Child Health	3
PH 8340	Genetic Susceptibilities and Environmental Health	3

Area Total: **27**

Degree Total:	62
----------------------	-----------

* Other appropriate elective courses may be available. Consult with your faculty advisor. Students should receive approval from their faculty advisors on the Doctoral Program of Study form before enrolling in and paying for any elective course.



DOCTOR OF PHILOSOPHY IN PUBLIC HEALTH CURRICULUM

The objective of the doctor of philosophy degree (Ph.D.) in public health at the School of Public Health is to educate the next generation of leaders to conduct independent research in academia, public policy, health care organizations and the private sector. Graduates of the Ph.D. program in public health contribute to public health scholarship and develop interventions to promote health, reduce health disparities, and ameliorate critical health problems at the local and global levels.

THE SCHOOL OF PUBLIC HEALTH:

- Prepares students to address contemporary public health problems with multi-disciplinary skills
- Advances public health sciences and our understanding of the causes and prevention of diseases
- Educates professionals and lay audiences to promote public health and disease prevention with service activities, initiatives, community-based projects and collaborations with the public health workforce

CONCENTRATIONS

- Environmental Health
- Epidemiology
- Health Promotion & Behavior
- Health Services & Policy Research

SUMMARY OF PH.D. DEGREE REQUIREMENTS: 62 CREDIT HOURS

The Ph.D. program requires a minimum of 62 credit hours of doctoral course work in a declared public health concentration. Candidates are required to complete a practicum, a comprehensive exam and a dissertation. All doctoral students will take core and research courses in addition to their concentration courses.

- Ph.D. core requirements: 18 credit hours
- Professional seminars: 5 credit hours
- Public health concentration with electives: 27 credit hours
- Research, teaching, practicum and culminating experience: 12 credit hours

PREREQUISITES: BASIC PUBLIC HEALTH CORE

Applicants to the Ph.D. program must provide documentation of their successful completion of the five core public health competencies at the graduate level, which the Council on Education for Public Health designates as the following: biostatistics, epidemiology, environmental health, health services administration, and social and behavioral sciences. Applicants can waive these requirements if they enter the Ph.D. program with an M.P.H. or have successfully completed comparable courses with a grade of B or better.



FOR MORE INFORMATION

Shannon R. Self-Brown, Ph.D.
*Professor, School of Public Health
Director, School of Public Health
Ph.D. Program
Associate Director, National SafeCare
Training and Research Center*

Phone: 404-413-1283
Email: sselfbrown@gsu.edu